

# PRODUCT LIST



- 1) FLANGES
- 2) PIPE FITTINGS
- 3) STRAIGHT COUPLINGS
- 4) TRANSITION COUPLINGS
- 5) FLANGE ADAPTORS
- 6) DISMANTLING JOINTS

**PRODUCT : CARBON STEEL FLANGES**

<b>S.NO</b>	<b>STANDARD</b>	<b>CODE NO</b>	<b>DESCRIPTION</b>	<b>MATERIAL</b>	<b>PRESSURE RATING (PN)</b>	<b>NOMINAL SIZE (DN) RANGE</b>
1	BS EN 1092-1	01	PLATE FLANGE FOR WELDING	SA 515 / 516 Gr. 60 / 70	PN 2.5	10 TO 4000
2	BS EN 1092-1	01	PLATE FLANGE FOR WELDING	SA 515 / 516 Gr. 60 / 70	PN 6	10 TO 3600
3	BS EN 1092-1	01	PLATE FLANGE FOR WELDING	SA 515 / 516 Gr. 60 / 70	PN 10	10 TO 3000
4	BS EN 1092-1	01	PLATE FLANGE FOR WELDING	SA 515 / 516 Gr. 60 / 70	PN 16	10 TO 2000
5	BS EN 1092-1	01	PLATE FLANGE FOR WELDING	SA 515 / 516 Gr. 60 / 70	PN 25	10 TO 2000
6	BS EN 1092-1	01	PLATE FLANGE FOR WELDING	SA 515 / 516 Gr. 60 / 70	PN 40	10 TO 600
7	BS EN 1092-1	05	BLANK FLANGE	SA 515 / 516 Gr. 60 / 70	PN 2.5	10 TO 4000
8	BS EN 1092-1	05	BLANK FLANGE	SA 515 / 516 Gr. 60 / 70	PN 6	10 TO 3600
9	BS EN 1092-1	05	BLANK FLANGE	SA 515 / 516 Gr. 60 / 70	PN 10	10 TO 3000
10	BS EN 1092-1	05	BLANK FLANGE	SA 515 / 516 Gr. 60 / 70	PN 16	10 TO 2000
11	BS EN 1092-1	05	BLANK FLANGE	SA 515 / 516 Gr. 60 / 70	PN 25	10 TO 2000
12	BS EN 1092-1	05	BLANK FLANGE	SA 515 / 516 Gr. 60 / 70	PN 40	10 TO 600
13	BS EN 1092-1	11	WELD NECK FLANGE	ASTM A216 Grade WCB	PN 2.5	10 TO 4000
14	BS EN 1092-1	11	WELD NECK FLANGE	ASTM A216 Grade WCB	PN 6	10 TO 3600
15	BS EN 1092-1	11	WELD NECK FLANGE	ASTM A216 Grade WCB	PN 10	10 TO 3000
16	BS EN 1092-1	11	WELD NECK FLANGE	ASTM A216 Grade WCB	PN 16	10 TO 2000
17	BS EN 1092-1	11	WELD NECK FLANGE	ASTM A216 Grade WCB	PN 25	10 TO 2000
18	BS EN 1092-1	11	WELD NECK FLANGE	ASTM A216 Grade WCB	PN 40	10 TO 600

**PRODUCT : CAST STEEL FLANGES**

<b>S.NO</b>	<b>STANDARD</b>	<b>CODE NO</b>	<b>DESCRIPTION</b>	<b>MATERIAL</b>	<b>CLASS / SERIES</b>	<b>NOMINAL SIZE (DN) RANGE</b>
1	BS EN 1092-1	01	PLATE FLANGE FOR WELDING	SA 515 / 516 Gr. 60 / 70	PN 2.5	10 TO 4000
2	BS EN 1092-1	01	PLATE FLANGE FOR WELDING	SA 515 / 516 Gr. 60 / 70	PN 6	10 TO 3600
3	BS EN 1092-1	01	PLATE FLANGE FOR WELDING	SA 515 / 516 Gr. 60 / 70	PN 10	10 TO 3000
4	BS EN 1092-1	01	PLATE FLANGE FOR WELDING	SA 515 / 516 Gr. 60 / 70	PN 16	10 TO 2000
5	BS EN 1092-1	01	PLATE FLANGE FOR WELDING	SA 515 / 516 Gr. 60 / 70	PN 25	10 TO 2000
6	BS EN 1092-1	01	PLATE FLANGE FOR WELDING	SA 515 / 516 Gr. 60 / 70	PN 40	10 TO 600
7	BS EN 1092-1	05	BLANK FLANGE	SA 515 / 516 Gr. 60 / 70	PN 2.5	10 TO 4000
8	BS EN 1092-1	05	BLANK FLANGE	SA 515 / 516 Gr. 60 / 70	PN 6	10 TO 3600
9	BS EN 1092-1	05	BLANK FLANGE	SA 515 / 516 Gr. 60 / 70	PN 10	10 TO 3000
10	BS EN 1092-1	05	BLANK FLANGE	SA 515 / 516 Gr. 60 / 70	PN 16	10 TO 2000
11	BS EN 1092-1	05	BLANK FLANGE	SA 515 / 516 Gr. 60 / 70	PN 25	10 TO 2000
12	BS EN 1092-1	05	BLANK FLANGE	SA 515 / 516 Gr. 60 / 70	PN 40	10 TO 600
13	BS EN 1092-1	11	WELD NECK FLANGE	ASTM A216 Grade WCB	PN 2.5	10 TO 4000
14	BS EN 1092-1	11	WELD NECK FLANGE	ASTM A216 Grade WCB	PN 6	10 TO 3600
15	BS EN 1092-1	11	WELD NECK FLANGE	ASTM A216 Grade WCB	PN 10	10 TO 3000
16	BS EN 1092-1	11	WELD NECK FLANGE	ASTM A216 Grade WCB	PN 16	10 TO 2000
17	BS EN 1092-1	11	WELD NECK FLANGE	ASTM A216 Grade WCB	PN 25	10 TO 2000
18	BS EN 1092-1	11	WELD NECK FLANGE	ASTM A216 Grade WCB	PN 40	10 TO 600

**PRODUCT : CARBON / CAST STEEL FLANGES**

S.NO	STANDARD	CODE NO	DESCRIPTION	MATERIAL	CLASS / SERIES	NOMINAL SIZE (DN) RANGE
1	ASME B 16.47a - 1998	NIL	WELD NECK / BLIND FLANGES	SA 515 / 516 Gr. 60 / 70	150 / A	26" TO 60"
2	ASME B 16.47a - 1998	NIL	WELD NECK / BLIND FLANGES	SA 515 / 516 Gr. 60 / 70	300 / A	26" TO 60"
3	ASME B 16.47a - 1998	NIL	WELD NECK / BLIND FLANGES	SA 515 / 516 Gr. 60 / 70	400 / A	26" TO 60"
4	ASME B 16.47a - 1998	NIL	WELD NECK / BLIND FLANGES	SA 515 / 516 Gr. 60 / 70	600 / A	26" TO 60"
5	ASME B 16.47a - 1998	NIL	WELD NECK / BLIND FLANGES	SA 515 / 516 Gr. 60 / 70	900 / A	26" TO 60"
6	ASME B 16.47a - 1998	NIL	WELD NECK / BLIND FLANGES	SA 515 / 516 Gr. 60 / 70	75 / B	26" TO 60"
7	ASME B 16.47a - 1998	NIL	WELD NECK / BLIND FLANGES	SA 515 / 516 Gr. 60 / 70	150 / B	26" TO 60"
8	ASME B 16.47a - 1998	NIL	WELD NECK / BLIND FLANGES	SA 515 / 516 Gr. 60 / 70	300 / B	26" TO 60"
9	ASME B 16.47a - 1998	NIL	WELD NECK / BLIND FLANGES	SA 515 / 516 Gr. 60 / 70	400 / B	26" TO 36"
10	ASME B 16.47a - 1998	NIL	WELD NECK / BLIND FLANGES	SA 515 / 516 Gr. 60 / 70	600 / B	26" TO 36"
11	ASME B 16.47a - 1998	NIL	WELD NECK / BLIND FLANGES	SA 515 / 516 Gr. 60 / 70	900 / B	26" TO 36"
1	ASME B 16.47a - 1998	NIL	WELD NECK / BLIND FLANGES	ASTM A216 Gr. WCB	150 / A	26" TO 60"
2	ASME B 16.47a - 1998	NIL	WELD NECK / BLIND FLANGES	ASTM A216 Gr. WCB	300 / A	26" TO 60"
3	ASME B 16.47a - 1998	NIL	WELD NECK / BLIND FLANGES	ASTM A216 Gr. WCB	400 / A	26" TO 60"
4	ASME B 16.47a - 1998	NIL	WELD NECK / BLIND FLANGES	ASTM A216 Gr. WCB	600 / A	26" TO 60"
5	ASME B 16.47a - 1998	NIL	WELD NECK / BLIND FLANGES	ASTM A216 Gr. WCB	900 / A	26" TO 60"
6	ASME B 16.47a - 1998	NIL	WELD NECK / BLIND FLANGES	ASTM A216 Gr. WCB	75 / B	26" TO 60"
7	ASME B 16.47a - 1998	NIL	WELD NECK / BLIND FLANGES	ASTM A216 Gr. WCB	150 / B	26" TO 60"
8	ASME B 16.47a - 1998	NIL	WELD NECK / BLIND FLANGES	ASTM A216 Gr. WCB	300 / B	26" TO 60"
9	ASME B 16.47a - 1998	NIL	WELD NECK / BLIND FLANGES	ASTM A216 Gr. WCB	400 / B	26" TO 36"
10	ASME B 16.47a - 1998	NIL	WELD NECK / BLIND FLANGES	ASTM A216 Gr. WCB	600 / B	26" TO 36"
11	ASME B 16.47a - 1998	NIL	WELD NECK / BLIND FLANGES	ASTM A216 Gr. WCB	900 / B	26" TO 36"

**PRODUCT : LINE PIPES**

<b>S.NO</b>	<b>STANDARD</b>	<b>DESCRIPTION</b>	<b>MATERIAL &amp; GRADE</b>	<b>PRESSURE RATING (PN)</b>	<b>NOMINAL SIZE (DN) RANGE</b>
1	API SPEC 5L	PLAIN-END LINE PIPE	API 5L Gr. B	AS PER STD	400 DN TO2000 DN
2	API SPEC 5L	PLAIN-END LINE PIPE	API 5L Gr. X42	AS PER STD	400 DN TO2000 DN
3	IS 3589 - 1981	PLAIN-END LINE PIPE	YSt 170 CL I,CL II,	AS PER STD	500 TO 2000

<b>PRODUCT : CARBON STEEL PIPE FITTINGS</b>				
<b>S.NO</b>	<b>STANDARD</b>	<b>DESCRIPTION</b>	<b>MATERIAL</b>	<b>NOMINAL SIZE (DN) RANGE</b>
1	ANSI /AWWA C208-83	TEES AND CROSSES	API 5L	6" TO 145"
2	ANSI /AWWA C208-83	REDUCING TEE	API 5L	6" TO 145"
3	ANSI /AWWA C208-83	LATERALS	API 5L	6" TO 145"
4	ANSI /AWWA C208-83	90° WYES	API 5L	6" TO 145"
5	ANSI /AWWA C208-83	CONCENTRIC REDUCERS	API 5L	6" TO 145"
6	ANSI /AWWA C208-83	ECCENTRIC REDUCERS	API 5L	6" TO 145"
7	ANSI /AWWA C208-83	ELBOW 45 – 90 DEGREES	API 5L	6" TO 145"
8	ANSI /AWWA C208-83	TANGENT OUTLETS	API 5L	6" TO 145"

<b>PRODUCT : CARBON STEEL PIPE FITTINGS</b>				
<b>S.NO</b>	<b>STANDARD</b>	<b>DESCRIPTION</b>	<b>MATERIAL</b>	<b>NOMINAL SIZE (DN) RANGE</b>
1	ASA B 16.9 AND BS 1640	ELBOWS AND RETURN BENDS – LONG RADIUS	API 5L	8" TO 36"
2	ASA B 16.9 AND BS 1640	ELBOWS AND RETURN BENDS – SHORT RADIUS	API 5L	8" TO 36"
3	ASA B 16.9 AND BS 1640	END CAPS	API 5L	8" TO 36"
4	ASA B 16.9 AND BS 1640	TEES	API 5L	8" TO 36"
5	ASA B 16.9 AND BS 1640	REDUCING TEES	API 5L	8" TO 36"
6	ASA B 16.9 AND BS 1640	CONCENTRIC REDUCER	API 5L	8" TO 36"
7	ASA B 16.9 AND BS 1640	ECCENTRIC REDUCER	API 5L	8" TO 36"

<b>PRODUCT : FLANGE ADAPTOR ASSEMBLY</b>					
<b>S.NO</b>	<b>STANDARD</b>	<b>DESCRIPTION</b>	<b>MATERIAL</b>	<b>NOMINAL SIZE (DN) RANGE</b>	<b>PRESSURE RATING PN</b>
1	BS EN 1092-1	FLANGE ADAPTOR ASSEMBLY	API 5L / SA 515 / 516 Gr.60/70	100 TO 3000	10
2	BS EN 1092-1	FLANGE ADAPTOR ASSEMBLY	API 5L / SA 515 / 516 Gr.60/70	100 TO 2000	16
3	BS EN 1092-1	FLANGE ADAPTOR ASSEMBLY	API 5L / SA 515 / 516 Gr.60/70	100 TO 1000	25
4	BS EN 1092-1	FLANGE ADAPTOR ASSEMBLY	API 5L / SA 515 / 516 Gr.60/70	100 TO 600	40

<b>PRODUCT : FLEXIBLE COUPLING</b>					
<b>S.NO</b>	<b>STANDARD</b>	<b>DESCRIPTION</b>	<b>MATERIAL</b>	<b>NOMINAL SIZE (DN) RANGE</b>	<b>PRESSURE RATING PN</b>
1	BS EN 1092-1	FLEXIBLE COUPLING	API 5L / SA 515 / 516 Gr.60/70	100 TO 3000	10
2	BS EN 1092-1	FLEXIBLE COUPLING	API 5L / SA 515 / 516 Gr.60/70	100 TO 2000	16
3	BS EN 1092-1	FLEXIBLE COUPLING	API 5L / SA 515 / 516 Gr.60/70	100 TO 1000	25
4	BS EN 1092-1	FLEXIBLE COUPLING	API 5L / SA 515 / 516 Gr.60/70	100 TO 600	40

<b>PRODUCT : DISMANTLING JOINTS</b>					
<b>S.NO</b>	<b>STANDARD</b>	<b>DESCRIPTION</b>	<b>MATERIAL</b>	<b>NOMINAL SIZE (DN) RANGE</b>	<b>PRESSURE RATING PN</b>
1	BS EN 1092-1	DISMANTLING JOINTS	API 5L / SA 515 / 516 Gr.60/70	100 TO 3000	10
2	BS EN 1092-1	DISMANTLING JOINTS	API 5L / SA 515 / 516 Gr.60/70	100 TO 2000	16
3	BS EN 1092-1	DISMANTLING JOINTS	API 5L / SA 515 / 516 Gr.60/70	100 TO 1000	25
4	BS EN 1092-1	DISMANTLING JOINTS	API 5L / SA 515 / 516 Gr.60/70	100 TO 600	40



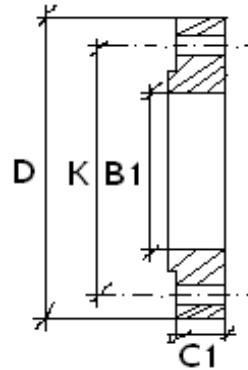
# PRODUCT

# FLANGES



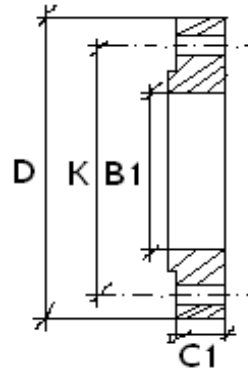
PRODUCT : CARBON STEEL FLANGES						
S.NO	STANDARD	TYPE	DESCRIPTION	MATERIAL	PRESSURE RATING (PN)	NOMINAL SIZE (DN) RANGE
1	BS EN 1092-1	01	PLATE FLANGE FOR WELDING	SA 515 / 516 Gr. 60 / 70	PN 2.5	10 TO 4000
2	BS EN 1092-1	01	PLATE FLANGE FOR WELDING	SA 515 / 516 Gr. 60 / 70	PN 6	10 TO 3600
3	BS EN 1092-1	01	PLATE FLANGE FOR WELDING	SA 515 / 516 Gr. 60 / 70	PN 10	10 TO 3000
4	BS EN 1092-1	01	PLATE FLANGE FOR WELDING	SA 515 / 516 Gr. 60 / 70	PN 16	10 TO 2000
5	BS EN 1092-1	01	PLATE FLANGE FOR WELDING	SA 515 / 516 Gr. 60 / 70	PN 25	10 TO 2000
6	BS EN 1092-1	01	PLATE FLANGE FOR WELDING	SA 515 / 516 Gr. 60 / 70	PN 40	10 TO 1600
7	BS EN 1092-1	05	BLANK FLANGE	SA 515 / 516 Gr. 60 / 70	PN 2.5	10 TO 4000
8	BS EN 1092-1	05	BLANK FLANGE	SA 515 / 516 Gr. 60 / 70	PN 6	10 TO 3600
9	BS EN 1092-1	05	BLANK FLANGE	SA 515 / 516 Gr. 60 / 70	PN 10	10 TO 3000
10	BS EN 1092-1	05	BLANK FLANGE	SA 515 / 516 Gr. 60 / 70	PN 16	10 TO 2000
11	BS EN 1092-1	05	BLANK FLANGE	SA 515 / 516 Gr. 60 / 70	PN 25	10 TO 2000
12	BS EN 1092-1	05	BLANK FLANGE	SA 515 / 516 Gr. 60 / 70	PN 40	10 TO 1600
13	BS EN 1092-1	11	WELD NECK FLANGE	ASTM A216 Grade WCB	PN 2.5	10 TO 4000
14	BS EN 1092-1	11	WELD NECK FLANGE	ASTM A216 Grade WCB	PN 6	10 TO 3600
15	BS EN 1092-1	11	WELD NECK FLANGE	ASTM A216 Grade WCB	PN 10	10 TO 3000
16	BS EN 1092-1	11	WELD NECK FLANGE	ASTM A216 Grade WCB	PN 16	10 TO 2000
17	BS EN 1092-1	11	WELD NECK FLANGE	ASTM A216 Grade WCB	PN 25	10 TO 2000
18	BS EN 1092-1	11	WELD NECK FLANGE	ASTM A216 Grade WCB	PN 40	10 TO 600

## DIMENSIONS OF PN 2.5 PLATE FLANGE FOR WELDING



Nominal Dia	OD	PCD	HOLE DIA	NO OF HOLES	BORE	FLANG E THK	Raised Face Dia	Raised Face Thk
DN	D	K	L		B1	C1	d1	f1
10 to 600	Use PN 6 rating (dimensions for these sizes are identical)							
700	860	810	26	24	To be Specified by the purchaser	40	775	5
800	975	920	30	24		44	880	
900	1075	1020	30	24		48	980	
1000	1175	1120	30	28		60	1080	
1200	1375	1320	30	32		---	1295	
1400	1575	1520	30	36		---	1510	
1600	1790	1730	30	40		---	1710	
1800	1990	1930	30	44		---	1920	
2000	2190	2130	30	48		---	2125	
2200	2405	2340	33	52	---	---	2295	6
2400	2605	2540	33	56	---	---	2495	
2600	2805	2740	33	60	---	---	2695	
2800	3030	2960	36	64	---	---	2910	
3000	3230	3160	36	68	---	---	3110	
3200	3430	3360	36	72	---	---	3310	
3400	3630	3560	36	76	---	---	3510	
3600	3840	3770	36	80	---	---	3720	
3800	4045	3970	39	80	---	---	3920	
4000	4245	4170	39	84	---	---	4120	

### DIMENSIONS OF PN 6 PLATE FLANGE FOR WELDING

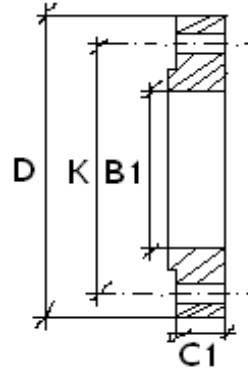


Nominal Dia	OD	PCD	HOLE DIA	NO OF HOLES	BORE	FLANGE THK	Raised Face Dia	Raised Face Thk
DN	D	K	L		B1	C1	d1	f1
10	75	50	11	4	18.0	12	35	2
15	80	55	11	4	22.0	12	40	
20	90	65	11	4	27.5	14	50	
25	100	75	11	4	34.5	14	60	
32	120	90	14	4	43.5	16	70	
40	130	100	14	4	49.5	16	80	3
50	140	110	14	4	61.5	16	90	
65	160	130	14	4	77.5	16	110	
80	190	160	18	4	90.5	18	128	
100	210	170	18	4	116.0	18	148	
125	240	200	18	8	141.5	20	178	
150	265	225	18	8	170.5	20	202	
200	320	280	18	8	221.5	22	268	4
250	375	335	18	12	276.5	24	312	
300	440	395	22	12	327.5	24	365	
350	490	445	22	12	359.5	26	415	
400	540	495	22	16	411.0	28	465	
450	595	550	22	16	462.0	30	520	5
500	645	600	22	20	513.5	30	570	
600	755	705	26	20	616.5	32	670	
700	860	810	26	24	---	40	775	
800	975	920	30	24	---	44	880	
900	1075	1020	30	24	---	48	980	
1000	1175	1120	30	28	---	52	1080	
1200	1405	1340	33	32	---	60	1295	
1400	1630	1560	36	36	---	72	1510	
1600	1830	1760	36	40	---	80	1710	
1800	2045	1970	39	44	---	88	1920	
2000	2265	2180	42	48	---	96	2125	



2200	2405	2340	33	52	---	---	2335	6
2400	2605	2540	33	56	---	---	2545	
2600	2805	2740	33	60	---	---	2750	
2800	3030	2960	36	64	---	---	2960	
3000	3230	3160	36	68	---	---	3160	
3200	3430	3360	36	72	---	---	3370	
3400	3630	3560	36	76	---	---	3580	
3600	3840	3770	36	80	---	---	3790	

### DIMENSIONS OF PN 10 PLATE FLANGE FOR WELDING

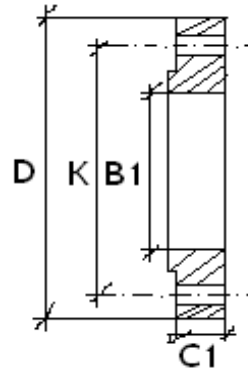


Nominal Dia	OD	PCD	HOLE DIA	NO OF HOLES	BORE	FLANGE THK	Raised Face Dia	Raised Face Thk								
DN	D	K	L		B1	C1	d1	f1								
10	Use PN 16 Dimensions						Use PN 40 Dimensions	2								
15																
20																
25																
32																
40																
50								Use PN 16 Dimensions						Use PN 40 Dimensions	3	
65																158
80																
100															212	
125	268															
150		320														
200	340		295	22	8	221.5	24								268	4
250	395	350	22	12	276.5	26	320									
300	445	400	22	12	327.5	26	370									
350	505	460	22	16	359.5	30	430									
400	565	515	26	16	411.0	32	482									
450	615	565	26	20	462.0	36	532									
500	670	620	26	20	513.5	38	585									
600	780	725	30	20	616.5	42	685	5								
700	895	840	30	24	---	50	800									
800	1015	950	33	24	---	56	905									
900	1115	1050	33	28	---	62	1005									
1000	1230	1160	36	28	---	70	1110									
1200	1455	1380	39	32	---	83	1330									
1400	1675	1590	42	36	---	---	1535									
1600	1915	1820	48	40	---	---	1760									
1800	2115	2020	48	44	---	---	1960									
2000	2325	2230	48	48	---	---	2170									



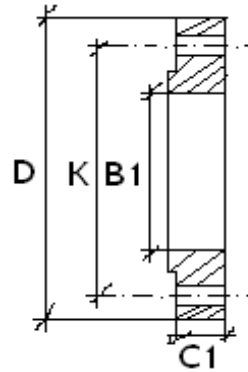
2200	2550	2440	56	52	---	---	2370	6
2400	2760	2650	56	56	---	---	2570	
2600	2960	2850	56	60	---	---	2780	
2800	3180	3070	56	64	---	---	3000	
3000	3405	3290	62	68	---	---	3210	

## DIMENSIONS OF PN 16 PLATE FLANGE FOR WELDING



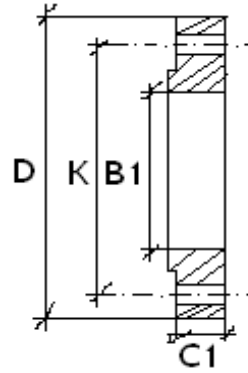
Nominal Dia	OD	PCD	HOLE DIA	NO OF HOLES	BORE	FLANG E THK	Raised Face Dia	Raised Face Thk
DN	D	K	L		B1	C1	d1	f1
10	90	60	14	4	18.0	14	Use PN 40 Dimensions	2
15	95	65	14	4	22.0	14		
20	105	78	14	4	27.5	16		
25	115	85	14	4	34.5	16		
32	140	100	18	4	43.5	18		
40	150	110	18	4	49.5	18		
50	165	125	18	4	61.5	20		
65	185	145	18	4	77.5	20		
80	200	160	18	8	90.5	20		
100	220	180	18	8	116.0	22	158	3
125	250	210	18	8	141.5	22	188	
150	285	240	22	8	170.5	24	212	
200	340	295	22	12	221.5	26	268	
250	405	355	26	12	276.5	29	320	
300	460	410	26	12	327.5	32	378	4
350	520	470	26	16	359.5	35	438	
400	580	525	30	16	411.0	38	490	
450	640	585	30	20	462.0	42	550	
500	715	650	33	20	513.5	46	610	
600	840	770	36	20	616.5	52	725	5
700	910	840	36	24	---	60	795	
800	1025	950	39	24	---	68	900	
900	1125	1050	39	28	---	76	1000	
1000	1255	1170	42	28	---	84	1115	
1200	1485	1390	48	32	---	98	1330	
1400	1685	1590	48	36	---	---	1530	
1600	1930	1820	56	40	---	---	1750	
1800	2130	2020	56	44	---	---	1950	
2000	2345	2230	62	48	---	---	2150	

## DIMENSIONS OF PN 25 PLATE FLANGE FOR WELDING



Nominal Dia	OD	PCD	HOLE DIA	NO OF HOLES	BORE	FLANGE THK	Raised Face Dia	Raised Face Thk								
DN	D	K	L		B1	C1	d1	f1								
10	Use PN 40 Dimensions								2							
15																
20																
25																
32																
40																
50							Use PN 40 Dimensions								3	
65																162
80																
100													218			
125																
150																
200	360	310	26	12	221.5	32							278	4		
250	425	370	30	12	276.5	35							335			
300	485	430	30	16	327.5	38							395			
350	555	490	33	16	359.5	42							450			
400	620	550	36	16	411.0	48							505			
450	670	600	36	20	462.0	54							555			
500	730	660	36	20	513.5	58	615	5								
600	845	770	39	20	616.5	68	720									
700	960	875	42	24	---	85	820									
800	1085	990	48	24	---	95	930									
900	1185	1090	48	28	---	---	1030									
1000	1320	1210	56	28	---	---	1140									
1200	1530	1420	56	32	---	---	1350									
1400	1755	1640	62	36	---	---	1560									
1600	1975	1860	62	40	---	---	1780									
1800	2185	2070	70	44	---	---	1985									
2000	2425	2300	70	48	---	---	2210									

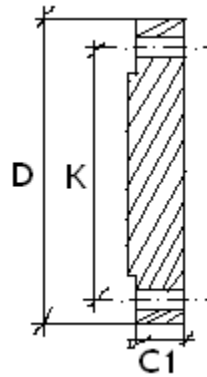
### DIMENSIONS OF PN 40 PLATE FLANGE FOR WELDING



Nominal Dia	OD	PCD	HOLE DIA	NO OF HOLES	BORE	FLANGE THK	Raised Face Dia	Raised Face Thk
DN	D	K	L		B1	C1	d1	f1
10	90	60	14	4	18.0	14	40	2
15	95	65	14	4	22.0	14	45	
20	105	75	14	4	27.5	16	58	
25	115	85	14	4	34.5	16	68	
32	140	100	18	4	43.5	18	78	
40	150	110	18	4	49.5	18	88	
50	165	125	18	4	61.5	20	102	3
65	185	145	18	8	77.5	22	122	
80	200	160	18	8	90.5	24	138	
100	235	190	22	8	116.0	26	162	
125	270	220	26	8	141.5	28	188	
150	300	250	26	8	170.5	30	218	
200	375	320	30	12	221.5	36	278	4
250	450	385	33	12	276.5	42	335	
300	515	450	33	16	327.5	52	395	
350	580	510	36	16	359.5	58	450	
400	660	585	39	16	411.0	65	505	
450	685	610	39	20	462.0	---	555	
500	755	670	42	20	513.5	---	615	5
600	890	795	48	20	616.5	---		

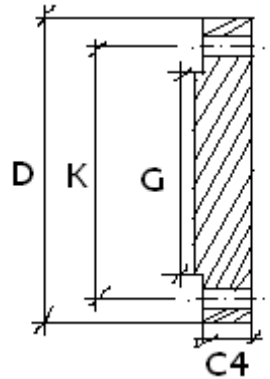


### DIMENSIONS OF PN 2.5 BLANK FLANGE



Nominal Dia	OD	PCD	HOLE DIA	NO OF HOLES	FLANGE THK
DN	D	K	L		C1
10 to 600	Use PN 6 rating (dimensions for these sizes are identical)				
700	860	810	26	24	40
800	975	920	30	24	44
900	1075	1020	30	24	48
1000	1175	1120	30	28	52
1200	1375	1320	30	32	50
1400	1575	1520	30	36	---
1600	1790	1730	30	40	---
1800	1990	1930	30	44	---
2000	2190	2130	30	48	---
2200	2405	2340	33	52	---
2400	2605	2540	33	56	---
2600	2805	2740	33	60	---
2800	3030	2960	36	64	---
3000	3230	3160	36	68	---
3200	3430	3360	36	72	---
3400	3630	3560	36	76	---
3600	3840	3770	36	80	---
3800	4045	3970	39	80	---
4000	4245	4170	39	84	---

### DIMENSIONS OF PN 6 BLANK FLANGE

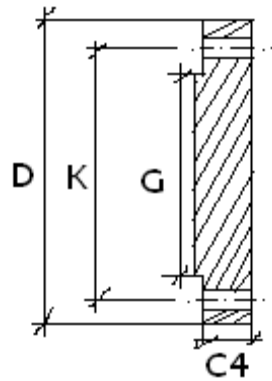


Nominal Dia	OD	PCD	HOLE DIA	NO OF HOLES	FLANGE THK	Diameter of shoulder
DN	D	K	L		C4	G
10	75	50	11	4	12	---
15	80	55	11	4	12	---
20	90	65	11	4	14	---
25	100	75	11	4	14	---
32	120	90	14	4	14	---
40	130	100	14	4	14	---
50	140	110	14	4	14	---
65	160	130	14	4	14	55
80	190	160	18	4	16	70
100	210	170	18	4	16	90
125	240	200	18	8	18	115
150	265	225	18	8	18	140
200	320	280	18	8	20	190
250	375	335	18	12	22	235
300	440	395	22	12	22	285
350	490	445	22	12	22	325
400	540	495	22	16	22	375
450	595	550	22	16	24	425
500	645	600	22	20	24	475
600	755	705	26	20	30	575
700	860	810	26	24	40	---
800	975	920	30	24	44	---
900	1075	1020	30	24	48	---
1000	1175	1120	30	28	52	---
1200	1405	1340	33	32	60	---
1400	1630	1560	36	36	68	---
1600	1830	1760	36	40	76	---
1800	2045	1970	39	44	84	---
2000	2265	2180	42	48	92	---



2200	2405	2340	33	52	---	---
2400	2605	2540	33	56	---	---
2600	2805	2740	33	60	---	---
2800	3030	2960	36	64	---	---
3000	3230	3160	36	68	---	---
3200	3430	3360	36	72	---	---
3400	3630	3560	36	76	---	---
3600	3840	3770	36	80	---	---

### DIMENSIONS OF PN 10 BLANK FLANGE

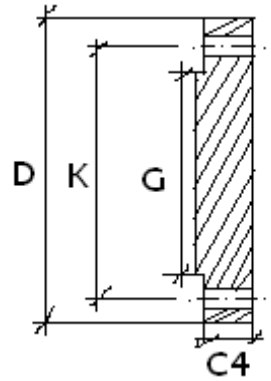


Nominal Dia	OD	PCD	HOLE DIA	NO OF HOLES	FLANGE THK	Diameter of shoulder
DN	D	K	L		C4	G
10	Use PN 16 dimensions					
15						
20						
25						
32						
40						
50						
65						
80						
100						
125						
150						
200	340	295	22	8	24	190
250	395	350	22	12	26	235
300	445	400	22	12	26	285
350	505	460	22	16	26	325
400	565	515	26	16	26	375
450	615	565	26	20	28	425
500	670	620	26	20	28	475
600	780	725	30	20	34	575
700	895	840	30	24	38	670
800	1015	950	33	24	48	770
900	1115	1050	33	28	50	860
1000	1230	1160	36	28	54	960
1200	1455	1380	39	32	66	1160
1400	1675	1590	42	36	---	---
1600	1915	1820	48	40	---	---
1800	2115	2020	48	44	---	---
2000	2325	2230	48	48	---	---



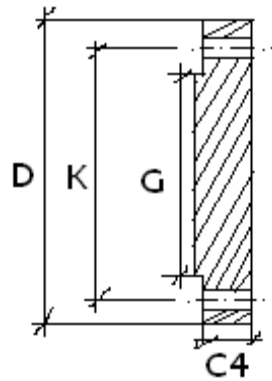
2200	2550	2440	56	52	---	---
2400	2760	2650	56	56	---	---
2600	2960	2850	56	60	---	---
2800	3180	3070	56	64	---	---
3000	3405	3290	62	68	---	---

### DIMENSIONS OF PN 16 BLANK FLANGE



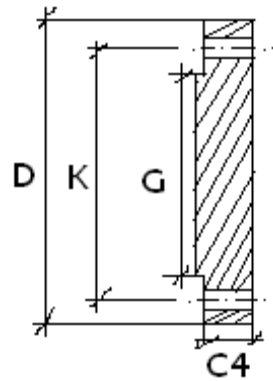
Nominal Dia	OD	PCD	HOLE DIA	NO OF HOLES	FLANGE THK	Diameter of shoulder
DN	D	K	L		C4	G
10	90	60	14	4	16	---
15	95	65	14	4	16	---
20	105	78	14	4	18	---
25	115	85	14	4	18	---
32	140	100	18	4	18	---
40	150	110	18	4	18	---
50	165	125	18	4	18	---
65	185	145	18	4	18	55
80	200	160	18	8	20	70
100	220	180	18	8	20	90
125	250	210	18	8	22	115
150	285	240	22	8	22	140
200	340	295	22	12	24	190
250	405	355	26	12	26	235
300	460	410	26	12	28	285
350	520	470	26	16	30	325
400	580	525	30	16	32	375
450	640	585	30	20	40	425
500	715	650	33	20	44	475
600	840	770	36	20	54	575
700	910	840	36	24	58	670
800	1025	950	39	24	62	770
900	1125	1050	39	28	64	860
1000	1255	1170	42	28	68	960
1200	1485	1390	48	32	---	1160
1400	1685	1590	48	36	---	---
1600	1930	1820	56	40	---	---
1800	2130	2020	56	44	---	---
2000	2345	2230	62	48	---	---

### DIMENSIONS OF PN 25 BLANK FLANGE



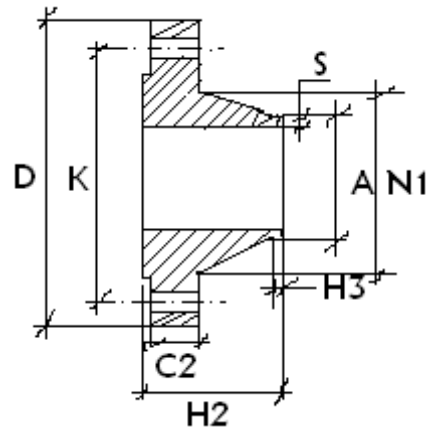
Nominal Dia	OD	PCD	HOLE DIA	NO OF HOLES	FLANGE THK	Diameter of shoulder
DN	D	K	L		C4	G
10	Use PN 40 Dimensions					
15						
20						
25						
32						
40						
50						
65						
80						
100						
125						
150						
200	360	310	26	12	30	190
250	425	370	30	12	32	235
300	485	430	30	16	34	285
350	555	490	33	16	38	325
400	620	550	36	16	40	375
450	670	600	36	20	50	425
500	730	660	36	20	51	475
600	845	770	39	20	66	575
700	960	875	42	24	---	---
800	1085	990	48	24	---	---
900	1185	1090	48	28	---	---
1000	1320	1210	56	28	---	---
1200	1530	1420	56	32	---	---
1400	1755	1640	62	36	---	---
1600	1975	1860	62	40	---	---
1800	2185	2070	70	44	---	---
2000	2425	2300	70	48	---	---

### DIMENSIONS OF PN 40 BLANK FLANGE



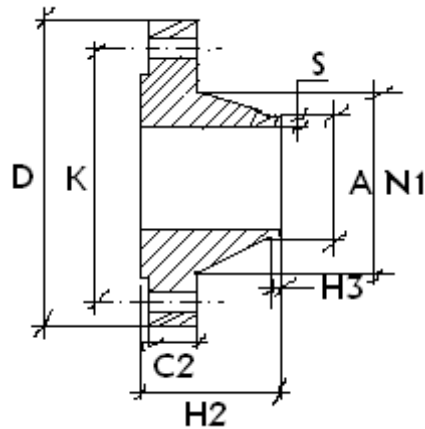
Nominal Dia	OD	PCD	HOLE DIA	NO OF HOLES	FLANGE THK	Diameter of shoulder
DN	D	K	L		C4	G
10	90	60	14	4	16	
15	95	65	14	4	16	---
20	105	75	14	4	18	---
25	115	85	14	4	18	---
32	140	100	18	4	18	---
40	150	110	18	4	18	---
50	165	125	18	4	20	---
65	185	145	18	8	22	55
80	200	160	18	8	24	70
100	235	190	22	8	24	90
125	270	220	26	8	26	115
150	300	250	26	8	28	140
200	375	320	30	12	36	190
250	450	385	33	12	38	235
300	515	450	33	16	42	285
350	580	510	36	16	46	325
400	660	585	39	16	50	375
450	685	610	39	20	57	425
500	755	670	42	20	57	475
600	890	795	48	20	72	575

## DIMENSIONS OF PN 2.5 WELDNECK FLANGES



Nominal Dia	OD	PCD	HOLE DIA	NO OF HOLES	BORE	FLANGE THK	LENGTHS		Neck Dia	Corner radii	Neck thk
DN	D	K	L		B1	C2	H2	H3	N1	R	S
10 to 600	Use PN 6 rating (dimensions for these sizes are identical)										
700	860	810	26	24	To be Specified by the purchaser	30	76	16	740	12	To be Specified by the purchaser
800	975	920	30	24		30	76	16	842	12	
900	1075	1020	30	24		30	74	16	942	12	
1000	1175	1120	30	28		30	74	16	1045	12	
1200	1375	1320	30	32		32	94	16	1245	16	
1400	1575	1520	30	36		38	96	16	1445	16	
1600	1790	1730	30	40		46	102	20	1645	16	
1800	1990	1930	30	44		46	110	20	1845	16	
2000	2190	2130	30	48		50	122	22	2045	16	
2200	2405	2340	33	52	---	56	129	25	2248	18	
2400	2605	2540	33	56	---	62	143	25	2448	18	
2600	2805	2740	33	60	---	64	148	25	2648	18	
2800	3030	2960	36	64	---	74	161	25	2848	18	
3000	3230	3160	36	68	---	80	170	25	3050	18	
3200	3430	3360	36	72	---	84	180	25	3250	20	
3400	3630	3560	36	76	---	90	194	28	3450	20	
3600	3840	3770	36	80	---	96	201	28	3652	20	
3800	4045	3970	39	80	---	102	212	28	3852	20	
4000	4245	4170	39	84	---	106	226	28	4052	20	

## DIMENSIONS OF PN 6 WELDNECK FLANGES

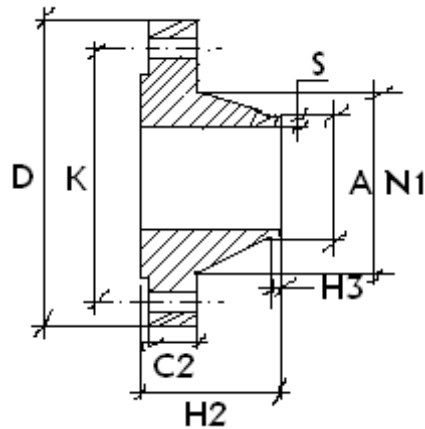


Nominal Dia	OD	PCD	HOLE DIA	NO OF HOLES	FLANGE THK	LENGTHS		Neck Dia	Corner radii	Neck thk
DN	D	K	L		C2	H2	H3	N1	R	S
10	75	50	11	4	12	28	6	26	3	1.8
15	80	55	11	4	12	30	6	30	3	2.0
20	90	65	11	4	14	32	6	38	4	2.3
25	100	75	11	4	14	35	6	42	4	2.6
32	120	90	14	4	14	35	6	55	5	2.6
40	130	100	14	4	14	38	7	62	5	2.6
50	140	110	14	4	14	38	8	74	5	2.9
65	160	130	14	4	14	38	9	88	6	2.9
80	190	160	18	4	16	42	10	102	6	3.2
100	210	170	18	4	16	45	10	130	6	3.6
125	240	200	18	8	18	48	10	155	6	4.0
150	265	225	18	8	18	48	12	184	8	4.5
200	320	280	18	8	20	55	15	236	8	5.6
250	375	335	18	12	22	60	15	290	10	6.3
300	440	395	22	12	22	62	15	342	10	7.1
350	490	445	22	12	22	62	15	385	10	7.1
400	540	495	22	16	22	65	15	438	10	7.1
450	595	550	22	16	22	65	15	492	12	7.1
500	645	600	22	20	24	68	15	538	12	7.1
600	755	705	26	20	30	70	16	640	12	7.1
700	860	810	26	24	30	76	16	740	12	7.1
800	975	920	30	24	30	76	16	842	12	7.1
900	1075	1020	30	24	34	78	16	942	12	7.1
1000	1175	1120	30	28	38	104	16	1045	12	7.1
1200	1405	1340	33	32	42	114	20	1248	12	8.0
1400	1630	1560	36	36	56	119	20	1452	12	8.0
1600	1830	1760	36	40	63	133	20	1655	12	9.0
1800	2045	1970	39	44	69	146	20	1855	15	10.0
2000	2265	2180	42	48	74	154	25	2058	15	11.0



2200	2405	2340	33	52	81	154	25	2260	15	---
2400	2605	2540	33	56	87	168	25	2462	15	---
2600	2805	2740	33	60	91	175	25	2665	15	---
2800	3030	2960	36	64	101	188	30	2865	15	---
3000	3230	3160	36	68	102	192	30	3068	15	---
3200	3430	3360	36	72	106	202	30	3272	15	---
3400	3630	3560	36	76	110	214	35	3475	15	---
3600	3840	3770	36	80	124	229	35	3678	15	---

## DIMENSIONS OF PN 10 WELDNECK FLANGES



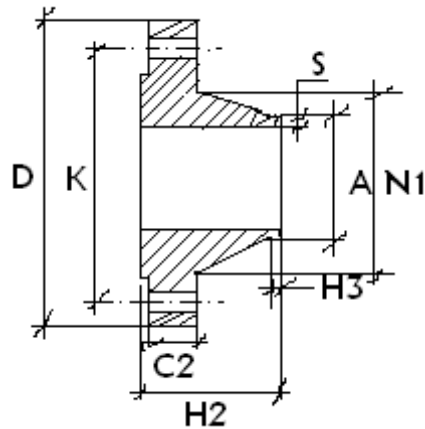
Nominal Dia	OD	PCD	HOLE DIA	NO OF HOLES	FLANGE THK	LENGTHS		Neck Dia	Corner radii	Neck thk
						H2	H3			
DN	D	K	L		C2	H2	H3	N1	R	S
10	Use PN 16 Dimensions									
15										
20										
25										
32										
40										
50										
65										
80										
100										
125										
150										
200	340	295	22	8	24	62	16	234	8	5.6
250	395	350	22	12	26	68	16	288	10	6.3
300	445	400	22	12	26	68	16	342	10	7.1
350	505	460	22	16	26	68	16	390	10	7.1
400	565	515	26	16	26	72	16	440	10	7.1
450	615	565	26	20	28	72	16	488	12	7.1
500	670	620	26	20	28	75	16	540	12	7.1
600	780	725	30	20	30	82	18	640	12	7.1
700	895	840	30	24	35	85	18	746	12	8.0
800	1015	950	33	24	38	96	18	848	12	10.0
900	1115	1050	33	28	38	99	20	948	12	10.0
1000	1230	1160	36	28	44	105	20	1050	12	11.0
1200	1455	1380	39	32	55	132	25	1256	12	12.0
1400	1675	1590	42	36	65	143	25	1460	12	14.0
1600	1915	1820	48	40	75	159	25	1666	12	15.0
1800	2115	2020	48	44	85	175	30	1866	15	16.0
2000	2325	2230	48	48	90	186	30	2070	15	*



2200	2550	2440	56	52	100	202	35	2275	18	*
2400	2760	2650	56	56	110	218	35	2478	18	*
2600	2960	2850	56	60	110	224	40	2680	18	*
2800	3180	3070	56	64	124	244	40	2882	18	*
3000	3405	3290	62	68	132	257	45	3085	18	*

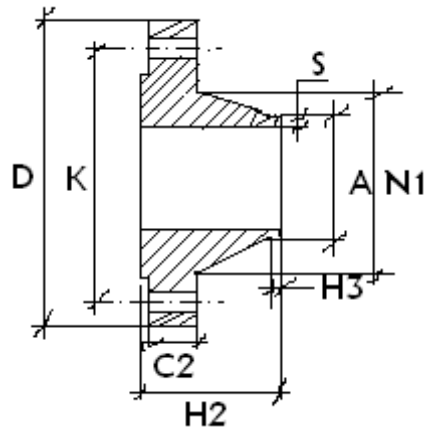
\* To be specified by the purchaser

## DIMENSIONS OF PN 16 WELDNECK FLANGES



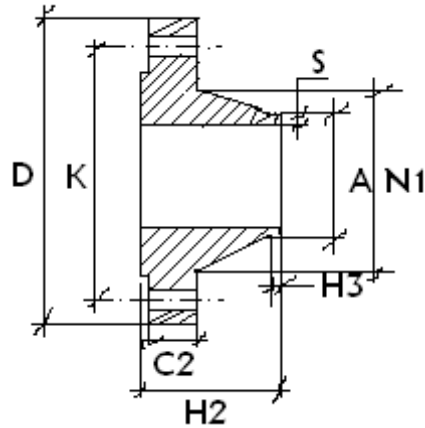
Nominal Dia	OD	PCD	HOLE DIA	NO OF HOLES	FLANGE THK	LENGTHS		Neck Dia	Corner radii	Neck thk
DN	D	K	L		C2	H2	H3	N1	R	S
10	90	60	14	4	16	35	6	28	3	1.8
15	95	65	14	4	16	38	6	32	3	2.0
20	105	78	14	4	18	40	6	39	4	2.3
25	115	85	14	4	18	40	6	46	4	2.6
32	140	100	18	4	18	42	6	56	5	2.6
40	150	110	18	4	18	45	7	64	5	2.6
50	165	125	18	4	18	45	8	74	5	2.9
65	185	145	18	4	18	45	10	92	6	2.9
80	200	160	18	8	20	50	10	110	6	3.2
100	220	180	18	8	20	52	12	130	6	3.6
125	250	210	18	8	22	55	12	158	6	4.0
150	285	240	22	8	22	55	12	184	8	4.5
200	340	295	22	12	24	62	16	234	8	5.6
250	405	355	26	12	26	70	16	288	10	6.3
300	460	410	26	12	28	78	16	342	10	7.1
350	520	470	26	16	30	82	16	390	10	8.0
400	580	525	30	16	32	85	16	444	10	8.0
450	640	585	30	20	34	83	16	490	12	8.0
500	715	650	33	20	36	84	16	546	12	8.0
600	840	770	36	20	40	88	18	650	12	8.8
700	910	840	36	24	40	104	18	750	12	8.8
800	1025	950	39	24	41	108	20	848	12	10.0
900	1125	1050	39	28	48	118	20	948	12	10.0
1000	1255	1170	42	28	59	137	22	1056	12	10.0
1200	1485	1390	48	32	78	160	30	1260	12	12.5
1400	1685	1590	48	36	84	177	30	1465	12	14.2
1600	1930	1820	56	40	102	204	35	1668	12	16.0
1800	2130	2020	56	44	110	218	35	1870	15	17.5
2000	2345	2230	62	48	124	238	40	2072	15	20.0

## DIMENSIONS OF PN 25 WELDNECK FLANGES



Nominal Dia	OD	PCD	HOLE DIA	NO OF HOLES	FLANGE THK	LENGTHS		Neck Dia	Corner radii	Neck thk
						H2	H3			
DN	D	K	L		C2	H2	H3	N1	R	S
10	Use PN 40 Dimensions									
15										
20										
25										
32										
40										
50										
65										
80										
100										
125										
150										
200	360	310	26	12	30	80	16	244	8	6.3
250	425	370	30	12	32	88	18	296	10	7.1
300	485	430	30	16	34	92	18	350	10	8.0
350	555	490	33	16	38	100	20	398	10	8.0
400	620	550	36	16	40	110	20	452	10	8.8
450	670	600	36	20	46	110	20	500	12	8.8
500	730	660	36	20	48	125	20	558	12	10.0
600	845	770	39	20	48	125	20	660	12	11.0
700	960	875	42	24	50	129	20	760	12	12.5
800	1085	990	48	24	53	138	22	864	12	14.2
900	1185	1090	48	28	57	148	24	968	12	16.0
1000	1320	1210	56	28	63	160	24	1070	12	17.5
1200	1530	1420	56	32	---	---	---	---	12	---
1400	1755	1640	62	36	---	---	---	---	12	---
1600	1975	1860	62	40	---	---	---	---	12	---
1800	2185	2070	70	44	---	---	---	---	15	---
2000	2425	2300	70	48	---	---	---	---	15	---

## DIMENSIONS OF PN 40 WELDNECK FLANGES



Nominal Dia	OD	PCD	HOLE DIA	NO OF HOLES	FLANGE THK	LENGTHS		Neck Dia	Corner radii	Neck thk
DN	D	K	L		C2	H2	H3	N1	R	S
10	90	60	14	4	16	35	6	28	3	1.8
15	95	65	14	4	16	38	6	32	3	2.0
20	105	75	14	4	18	40	6	40	4	2.3
25	115	85	14	4	18	40	6	46	4	2.6
32	140	100	18	4	18	42	6	56	5	2.6
40	150	110	18	4	18	45	7	64	5	2.6
50	165	125	18	4	20	48	8	74	5	2.9
65	185	145	18	8	22	52	10	92	6	2.9
80	200	160	18	8	24	58	12	110	6	3.2
100	235	190	22	8	24	65	12	134	6	3.6
125	270	220	26	8	26	68	12	162	6	4.0
150	300	250	26	8	28	75	12	190	8	4.5
200	375	320	30	12	34	88	16	244	8	6.3
250	450	385	33	12	38	105	18	306	10	7.1
300	515	450	33	16	42	115	18	362	10	8.0
350	580	510	36	16	46	125	20	408	10	8.8
400	660	585	39	16	50	135	20	462	10	11.0
450	685	610	39	20	57	135	20	500	12	12.5
500	755	670	42	20	57	140	20	562	12	14.2
600	890	795	48	20	72	150	20	666	12	16.0



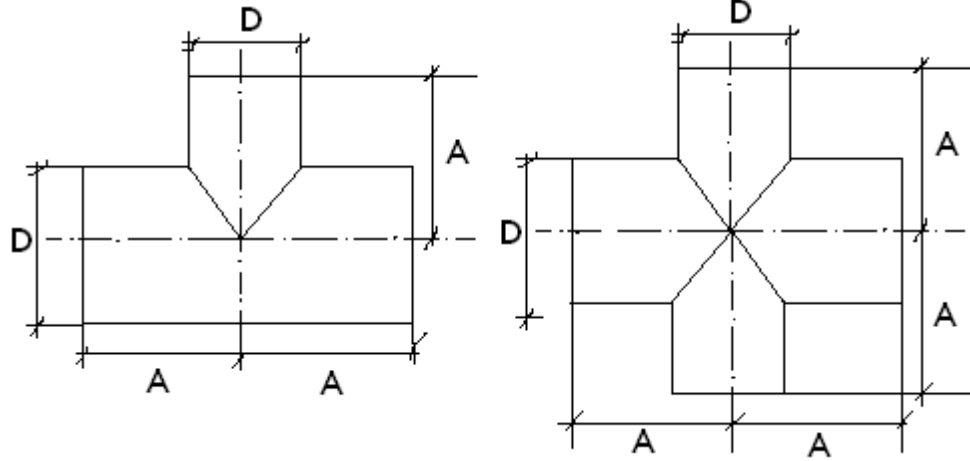
# PRODUCT

# PIPE FITTINGS



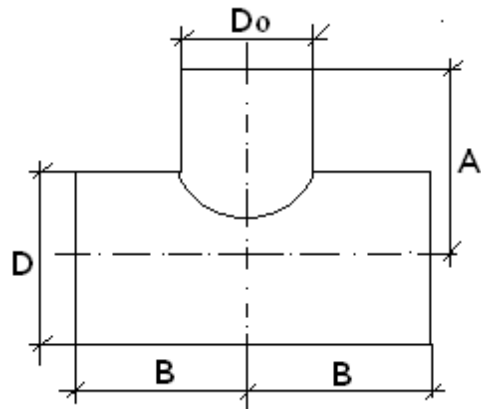
<b>PRODUCT : CARBON STEEL PIPE FITTINGS</b>				
<b>S.NO</b>	<b>STANDARD</b>	<b>DESCRIPTION</b>	<b>MATERIAL</b>	<b>NOMINAL SIZE (DN) RANGE</b>
1	ASME B 16.9 /AWWA C208	TEES AND CROSSES	AS PER THE ADJOINING PIPE	6" TO 144"
2	ASME B 16.9 /AWWA C208	REDUCING TEE	AS PER THE ADJOINING PIPE	6" TO 144"
3	ASME B 16.9 /AWWA C208	LATERALS (Equal Diameters) LATERALS (Unequal Diameters)	AS PER THE ADJOINING PIPE	6" TO 144"
4	ASME B 16.9 /AWWA C208	WYES	AS PER THE ADJOINING PIPE	6" TO 144"
5	ASME B 16.9 /AWWA C208	CONCENTRIC REDUCERS	AS PER THE ADJOINING PIPE	6" TO 144"
6	ASME B 16.9 /AWWA C208	ECCENTRIC REDUCERS	AS PER THE ADJOINING PIPE	6" TO 144"
7	ASME B 16.9 /AWWA C208	TANGENTIAL OUTLETS	AS PER THE ADJOINING PIPE	6" TO 144"
8	ASME B 16.9 /AWWA C208	MITER END CUTS & ELBOW	AS PER THE ADJOINING PIPE	6" TO 144"

### DIMENSIONS FOR STEEL WATER PIPE TEE / CROSS



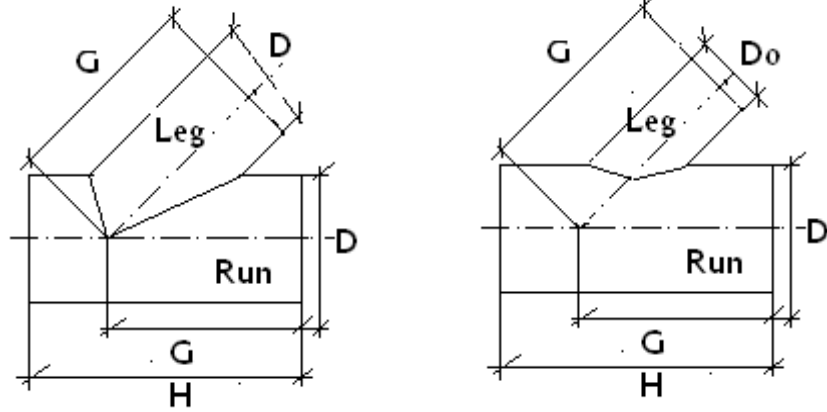
NOMINAL DIAMETER	TEE
D	A
6	8
8	9
10	11
12	12
14	14
16	15
18	16
20	18
22	20
24	22
30	25
36	29
42	33
48	36
56	41
60	45
66	48
72	51
78	55
84	59
90	62
96	66
102	70
108	74
114	78
120	82
126	86
132	90
138	94
144	98

## DIMENSIONS FOR STEEL WATER PIPE REDUCING TEE



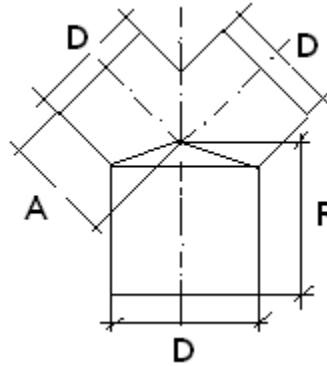
NOMINAL DIAMETER		REDUCING TEE	
D(Inches)	Do(Inches)	B(mm)	A(mm)
6	3	165	203
8	4	178	229
10	5	216	279
12	6	229	305
14	7	267	356
16	8	279	381
18	9	305	419
20	10	330	457
22	11	368	508
24	12	406	559
30	15	445	635
36	18	508	737
42	21	572	838
48	24	610	914
56	28	711	1067
60	30	737	1118
66	33	800	1219
72	36	838	1295
78	39	902	1397
84	42	965	1499
90	45	1003	1575
96	48	1067	1676
102	51	1130	1778
108	54	1194	1880
114	57	1257	1981
120	60	1321	2083
126	63	1384	2184
132	66	1448	2286
138	69	1511	2388
144	72.5	1581	2502

**DIMENSIONS FOR STEEL WATER PIPE LATERALS (EQUAL & REDUCING)**



NOMINAL DIAMETER D(Inches)	LATERALS $\theta=30^\circ$ MINIMUM	
	G(Inches)	H(Inches)
6	23	29
8	27	33
10	32	40
12	36	44
14	41	49
16	45	51
18	48	59
20	54	64
22	60	71
24	65	78
30	76	90
36	90	105
42	103	120
48	114	132
56	129	150
60	140	162
66	154	177
72	165	189
78	178	204
84	191	219
90	202	231
96	216	246
102	229	265
108	242	276
114	255	291
120	268	305
126	287	321
132	295	336
138	348	351
144	371	365

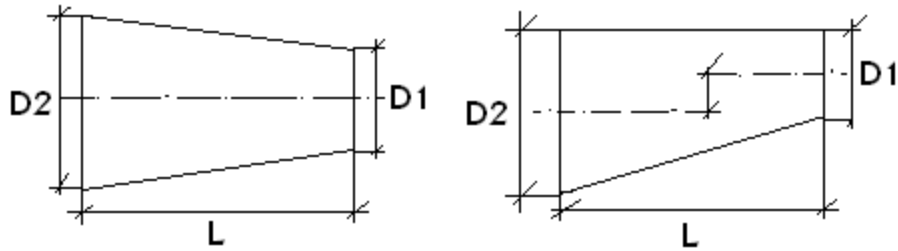
### DIMENSIONS FOR STEEL WATER PIPE WYES 90°



NOMINAL DIAMETER		WYES $\theta=30^\circ$ MINIMUM	
D(Inches)	A	G(Inches)	H(Inches)
6	8	23	29
8	9	27	33
10	11	32	40
12	12	36	44
14	14	41	49
16	15	45	51
18	16	48	59
20	18	54	64
22	20	60	71
24	22	65	78
30	25	76	90
36	29	90	105
42	33	103	120
48	36	114	132
56	41	129	150
60	45	140	162
66	48	154	177
72	51	165	189
78	55	178	204
84	59	191	219
90	62	202	231
96	66	216	246
102	70	229	265
108	74	242	276
114	78	255	291
120	82	268	305
126	86	287	321
132	90	295	336
138	94	348	351
144	98	371	365

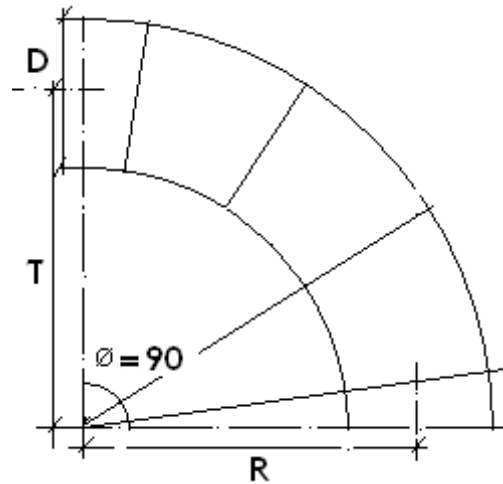


**DIMENSIONS FOR STEEL WATER PIPE CONCENTRIC & ECCENTRIC REDUCERS**



NOMINAL DIAMETER		LENGTH
D2	D1	L
16	14	8
16	12	16
18	16	8
18	14	16
18	12	24
20	18	8
20	16	16
20	14	24
20	12	32
24	20	16
24	18	24
24	16	32
24	14	40
24	12	48
26	24	8
26	20	24
26	18	32
26	16	40
26	14	48
26	12	56
30	26	16
30	24	24
30	22	32
30	20	40
30	18	48
30	16	56
36	30	24
36	24	48
36	20	64
36	18	72

### DIMENSIONS FOR STEEL WATER PIPE ELBOW 90°



NOMINAL DIAMETER	Ø=90°	
	R	T
6	18.4	18.4
8	19.4	19.4
10	20.5	20.5
12	22.0	22.0
14	23.3	23.3
16	25.6	25.6
18	27.9	27.9
20	30.1	30.1
22	32.4	32.4
24	34.6	34.6
30	41.4	41.4
36	48.2	48.2
42	51.2	51.2
48	54.2	54.2
54	57.2	57.2
60	60.2	60.2
66	63.2	63.2
72	66.2	66.2
78	69.2	69.2
84	72.2	72.2
90	75.2	75.2
96	78.2	78.2
102	81.2	81.2
108	84.2	84.2
114	87.2	87.2
120	90.2	90.2
126	91.2	91.2
132	96.2	96.2
138	99.3	99.3
144	102.2	102.2



PRODUCT :

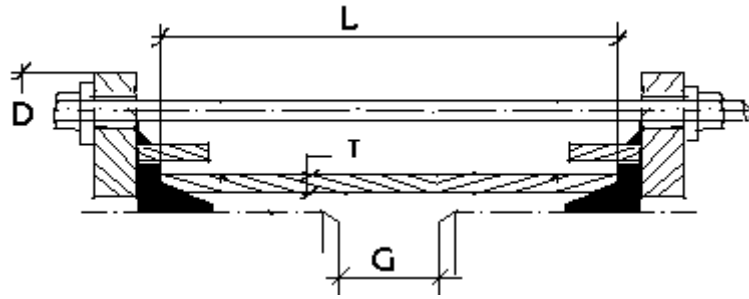
STRAIGHT

COUPLING



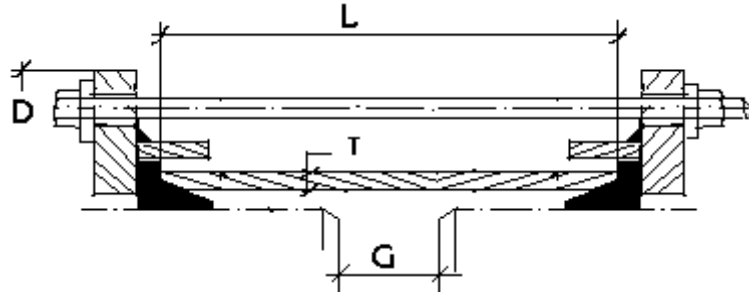
<b>PRODUCT : STRAIGHT COUPLING</b>					
<b>S.NO</b>	<b>STANDARD</b>	<b>DESCRIPTION</b>	<b>MATERIAL</b>	<b>NOMINAL SIZE (DN) RANGE</b>	<b>PRESSURE RATING PN</b>
1	BS EN 1092-1	STRAIGHT COUPLING FOR STEEL PIPE	API 5L / SA 515 / 516 Gr.60/70	80 TO 1200	10
2	BS EN 1092-1	STRAIGHT COUPLING FOR STEEL PIPE	API 5L / SA 515 / 516 Gr.60/70	80 TO 1200	16
3	BS EN 1092-1	STRAIGHT COUPLING FOR STEEL PIPE	API 5L / SA 515 / 516 Gr.60/70	80 TO 1200	25
1	BS EN 1092-1	STRAIGHT COUPLING FOR DUCTILE IRON PIPE	API 5L / SA 515 / 516 Gr.60/70	80 TO 1200	10
2	BS EN 1092-1	STRAIGHT COUPLING FOR DUCTILE IRON PIPE	API 5L / SA 515 / 516 Gr.60/70	80 TO 1200	16
3	BS EN 1092-1	STRAIGHT COUPLING FOR DUCTILE IRON PIPE	API 5L / SA 515 / 516 Gr.60/70	80 TO 1200	25

## STRAIGHT COUPLING – DIMENSIONS FOR STEEL PIPE



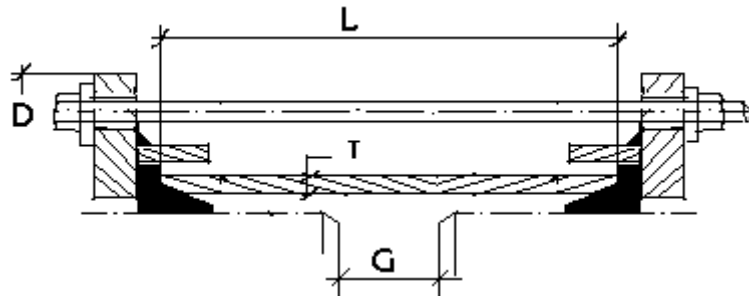
DN	PN	Ø PIPE	D	T	L	STUDS & NUTS
80	25	88.9	180	5	110	4 x M12-180
80	25	88.9	185	6	110	4 x M12-180
100	10/16	114	205	5	110	4 x M12-180
100	25	114	210	6	110	4 x M12-180
125	10/16	139	230	5	110	4 x M12-180
125	25	139	235	6	110	4 x M12-180
150	10/16	168.3	260	5	110	4 x M12-180
150	25	168.3	265	6	110	4 x M12-180
200	10/16	219	310	6	110	4 x M12-180
200	25	219	315	7	110	4 x M12-180
250	10/16	273	365	6	110	6 x M12-210
250	25	273	370	7	110	6 x M12-210
300	10/16	323	415	6	110	6 x M12-210
300	25	323	420	7	110	6 x M12-210

## FLEXIBLE COUPLING – DIMENSIONS FOR STEEL PIPE



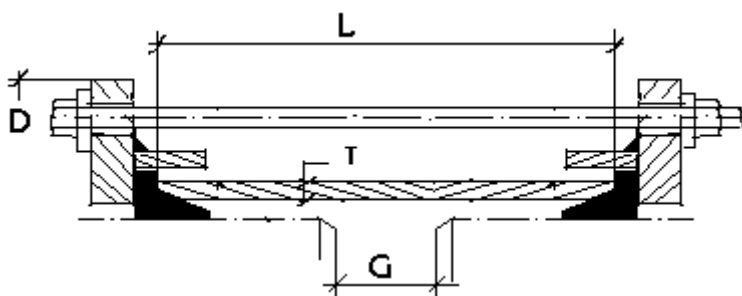
DN	PN	Ø PIPE	D	T	L	STUDS & NUTS
350	10	355	445	6	180	8 x M12-265
	16	355	450	7	180	8 x M12-265
	25	355	455	8	180	8 x M12-265
400	10	406	495	6	180	8 x M12-265
	16	406	500	7	180	8 x M12-265
	25	406	505	8	180	8 x M12-265
450	10	457	545	6	180	10 x M12-265
	16	457	550	7	180	10 x M12-265
	25	457	555	8	180	10 x M12-265
500	10	508	595	6	180	10 x M12-265
	16	508	600	7	180	10 x M12-265
	25	508	605	8	180	10 x M12-265
600	10	610	700	6	180	10 x M12-265
	16	610	705	7	180	10 x M12-265
	25	610	710	8	180	10 x M12-265
700	10	711	805	8	180	12 x M12-265
	16	711	810	9	180	12 x M12-265
	25	711	815	10	180	12 x M12-265
800	10	813	905	8	180	12 x M12-265
	16	813	910	9	180	12 x M12-265
	25	813	915	10	180	12 x M12-265
900	10	914	1010	8	180	14 x M16-265
	16	914	1012	9	180	14 x M16-265
	25	914	1015	10	180	14 x M16-265
1000	10	1016	1110	8	180	14 x M16-265
	16	1016	1112	9	180	14 x M16-265
	25	1016	1115	10	180	14 x M16-265
1200	10	1220	1315	8	180	16 x M16-265
	16	1220	1320	9	180	16 x M16-265
	25	1220	1320	10	180	16 x M16-265

## STRAIGHT COUPLING – DIMENSIONS FOR DUCTILE IRON PIPE



DN	PN	Ø PIPE	D1	T	L	STUDS & NUTS
80	10/16	98	190	5	110	4 x M12-180
80	25	98	195	6	110	4 x M12-180
100	10/16	118	210	5	110	4 x M12-180
100	25	118	215	6	110	4 x M12-180
125	10/16	144	235	5	110	4 x M12-180
125	10/16	144	240	6	110	4 x M12-180
150	10/16	170	260	5	110	4 x M12-180
150	25	170	265	6	110	4 x M12-180
200	10/16	222	315	6	110	6 x M12-210
200	25	222	320	7	110	6 x M12-210
250	10/16	274	365	6	110	6 x M12-210
250	25	274	370	7	110	6 x M12-210
300	10/16	326	420	6	110	6 x M12-210
300	25	326	425	7	110	6 x M12-210

## STRAIGHT COUPLING – DIMENSIONS FOR DUCTILE IRON PIPE



DN	PN	Ø PIPE	D1	T	L	STUDS & NUTS
350	10	378	470	6	170	8 x M16-265
	16	378	470	7	170	8 x M16-265
	25	378	475	8	180	8 x M16-265
400	10	429	520	6	170	8 x M16-265
	16	429	522	7	170	8 x M16-265
	25	429	524	8	180	8 x M16-265
450	10	480	572	6	170	10 x M16-265
	16	480	574	7	170	10 x M16-265
	25	480	575	8	180	10 x M16-265
500	10	532	624	6	170	10 x M16-265
	16	532	628	7	170	10 x M16-265
	25	532	630	8	180	10 x M16-265
600	10	635	726	6	170	10 x M16-265
	16	635	728	7	170	10 x M16-265
	25	635	730	8	180	10 x M16-265
700	10	738	834	8	175	12 x M16-265
	16	738	836	9	175	12 x M16-265
	25	738	838	10	185	12 x M16-265
800	10	842	938	8	175	12 x M16-265
	16	842	940	9	175	12 x M16-265
	25	842	942	10	185	12 x M16-265
900	10	945	1040	8	175	14 x M16-265
	16	945	1042	9	175	14 x M16-265
	25	945	1044	10	185	14 x M16-265
1000	10	1048	1144	8	175	14 x M16-265
	16	1048	1146	9	175	14 x M16-265
	25	1048	1148	10	185	14 x M16-265
1200	10	1255	1350	8	175	16 x M16-265
	16	1255	1352	9	175	16 x M16-265
	25	1255	1354	10	185	16 x M16-265



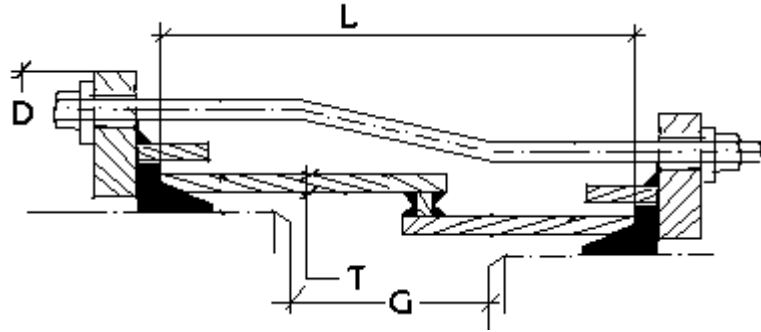
PRODUCT :  
TRANSITION  
COUPLING



**PRODUCT : TRANSITION COUPLING**

<b>S.NO</b>	<b>STANDARD</b>	<b>DESCRIPTION</b>	<b>MATERIAL</b>	<b>NOMINAL SIZE (DN) RANGE</b>	<b>PRESSURE RATING PN</b>
1	BS EN 1092-1	TRANSITION COUPLING FOR DUCTILE IRON PIPE TO STEEL PIPE	API 5L / SA 515 / 516 Gr.60/70	80 TO 1200	10
2	BS EN 1092-1	TRANSITION COUPLING FOR DUCTILE IRON PIPE TO STEEL PIPE	API 5L / SA 515 / 516 Gr.60/70	80 TO 1200	16
3	BS EN 1092-1	TRANSITION COUPLING FOR DUCTILE IRON PIPE TO STEEL PIPE	API 5L / SA 515 / 516 Gr.60/70	80 TO 1200	25

## TRANSITION COUPLING – DIMENSIONS FOR DUCTILE IRON TO STEEL PIPE



DN	PN	Ø PIPE	D	T	L	STUDS & NUTS
350	10	355/378	480	6	200	8 x M16-285
	16	355/378	482	7	200	8 x M16-285
	25	355/378	485	8	200	8 x M16-285
400	10	406/429	530	6	200	10 x M16-285
	16	406/429	532	7	200	10 x M16-285
	25	406/429	534	8	200	10 x M16-285
450	10	457/480	582	6	200	10 x M16-285
	16	457/480	584	7	200	10 x M16-285
	25	457/480	586	8	200	10 x M16-285
500	10	508/532	634	6	200	10 x M16-285
	16	508/532	636	7	200	10 x M16-285
	25	508/532	638	8	200	10 x M16-285
600	10	610/635	736	6	200	10 x M16-285
	16	610/635	738	7	200	10 x M16-285
	25	610/635	740	8	200	10 x M16-285
700	10	711/738	844	8	200	12 x M16-285
	16	711/738	846	9	200	12 x M16-285
	25	711/738	848	10	200	12 x M16-285
800	10	813/842	946	8	200	12 x M16-285
	16	813/842	948	9	200	12 x M16-285
	25	813/842	950	10	200	12 x M16-285
900	10	914/945	1050	8	200	14 x M16-285
	16	914/945	1052	9	200	14 x M16-285
	25	914/945	1054	10	200	14 x M16-285
1000	10	1016/1048	1154	8	200	14 x M16-285
	16	1016/1048	1156	9	200	14 x M16-285
	25	1016/1048	1158	10	200	14 x M16-285
1200	10	1220/1255	1360	8	200	16 x M16-285
	16	1220/1255	1362	9	200	16 x M16-285
	25	1220/1255	1364	10	200	16 x M16-285



PRODUCT :

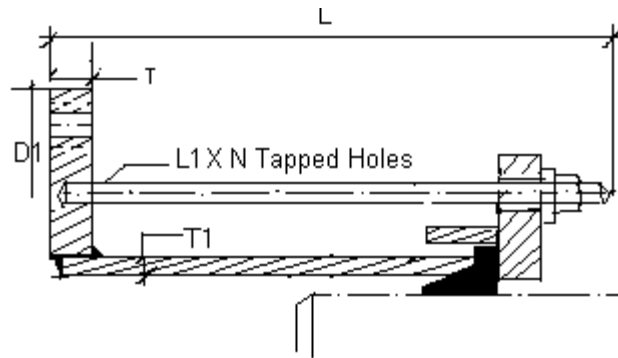
FLANGE  
ADAPTOR



**PRODUCT : FLANGE ADAPTOR ASSEMBLY**

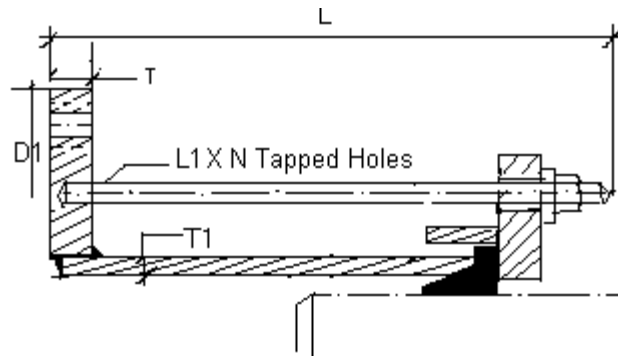
<b>S.NO</b>	<b>STANDARD</b>	<b>DESCRIPTION</b>	<b>MATERIAL</b>	<b>NOMINAL SIZE (DN) RANGE</b>	<b>PRESSURE RATING PN</b>
1	BS EN 1092-1	FLANGE ADAPTOR ASSEMBLY for S.P.	API 5L / SA 515 / 516 Gr.60/70	80 TO 1200	10
2	BS EN 1092-1	FLANGE ADAPTOR ASSEMBLY for S.P.	API 5L / SA 515 / 516 Gr.60/70	80 TO 1200	16
3	BS EN 1092-1	FLANGE ADAPTOR ASSEMBLY for S.P.	API 5L / SA 515 / 516 Gr.60/70	80 TO 1200	25
1	BS EN 1092-1	FLANGE ADAPTOR ASSEMBLY for D.I.	API 5L / SA 515 / 516 Gr.60/70	80 TO 1200	10
2	BS EN 1092-1	FLANGE ADAPTOR ASSEMBLY for D.I.	API 5L / SA 515 / 516 Gr.60/70	80 TO 1200	16
3	BS EN 1092-1	FLANGE ADAPTOR ASSEMBLY for D.I.	API 5L / SA 515 / 516 Gr.60/70	80 TO 1200	25

## FLANGE ADAPTOR – DIMENSIONS FOR STEEL PIPE



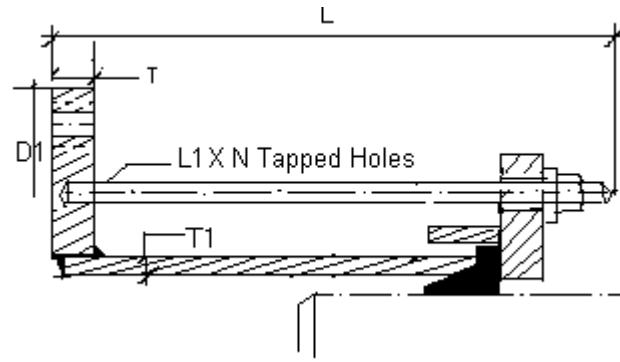
DN	PN	Ø PIPE	D1	T	T1	L	STUDS & NUTS
80	16 / 40	88.9	200	20	5	130	4 x M12
100	16	114	220	20	5	130	4 x M12
	40	114	235	20	5	130	4 x M12
125	16	139	250	22	5	130	4 x M12
	40	139	270	22	5	130	4 x M12
150	16	168.3	285	22	5	130	4 x M12
	40	168.3	300	22	5	130	4 x M12
200	10/16	219	340	24	6	130	6 x M12
	25	219	360	24	6	130	6 x M12
	40	219	375	24	6	130	6 x M12
250	10/16	273	405	24	6	130	6 x M12
	25	273	425	24	6	130	6 x M12
	40	273	450	24	6	130	6 x M12
300	10/16	323	460	24	6	130	6 x M12
	25	323	485	24	6	130	8 x M12
	40	323	515	24	6	130	8 x M12

## FLANGE ADAPTOR – DIMENSIONS FOR STEEL PIPE



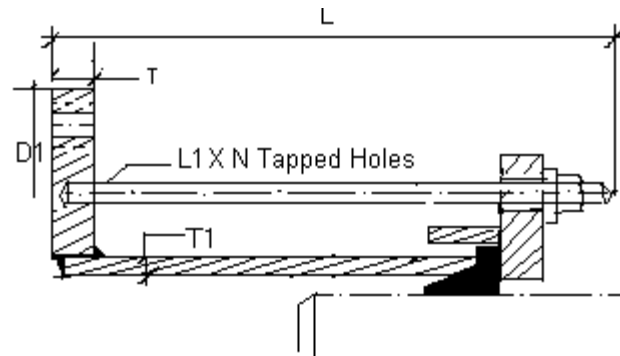
DN	PN	Ø PIPE	D1	T	T1	L	STUDS & NUTS
350	10	355	445	8	26	170	8 x M16
	16	355	460	8	26	170	8 x M16
	25	355	485	8	28	180	8 x M16
400	10	406	565	8	26	170	8 x M16
	16	406	580	8	26	170	8 x M16
	25	406	620	8	28	180	8 x M16
450	10	457	615	8	26	170	10 x M16
	16	457	640	8	26	170	10 x M16
	25	457	670	8	28	180	10 x M16
500	10	508	670	8	26	170	10 x M16
	16	508	715	8	26	170	10 x M16
	25	508	730	8	28	180	10 x M16
600	10	610	780	8	26	170	10 x M16
	16	610	840	8	26	170	10 x M16
	25	610	845	8	28	180	10 x M16
700	10	711	895	8	28	175	12 x M16
	16	711	910	8	28	175	12 x M16
	25	711	960	8	30	185	12 x M16
800	10	813	1015	8	28	175	12 x M16
	16	813	1025	8	28	175	12 x M16
	25	813	1085	8	30	185	12 x M16
900	10	914	1115	8	28	175	14 x M16
	16	914	1125	8	28	175	14 x M16
	25	914	1185	8	30	185	14 x M16
1000	10	1016	1230	8	28	175	14 x M16
	16	1016	1255	8	28	175	14 x M16
	25	1016	1320	12	30	185	14 x M16
1200	10	1220	1455	8	28	175	16 x M16
	16	1220	1485	8	28	175	16 x M16
	25	1220	1530	12	30	185	16 x M16

### FLANGE ADAPTOR – DIMENSIONS FOR DUCTILE IRON PIPE



DN	PN	Ø PIPE	D1	T	T1	L	STUDS & NUTS
80	16	98	200	20	5	130	4 x M12
100	16	118	220	20	5	130	4 x M12
125	16	144	250	22	5	130	4 x M12
150	16	170	285	22	5	130	4 x M12
200	10/16	222	340	24	6	130	6 x M12
250	10/16	274	405	24	6	130	6 x M12
300	10/16	326	460	24	6	130	6 x M12

## FLANGE ADAPTOR – DIMENSIONS FOR DUCTILE IRON PIPE



DN	PN	Ø PIPE	D1	T	T1	L	STUDS & NUTS
350	10	378	445	8	26	170	8 x M16
	16	378	460	8	26	170	8 x M16
	25	378	485	8	28	180	8 x M16
400	10	429	565	8	26	170	8 x M16
	16	429	580	8	26	170	8 x M16
	25	429	620	8	28	180	8 x M16
450	10	480	615	8	26	170	10 x M16
	16	480	640	8	26	170	10 x M16
	25	480	670	8	28	180	10 x M16
500	10	532	670	8	26	170	10 x M16
	16	532	715	8	26	170	10 x M16
	25	532	730	8	28	180	10 x M16
600	10	635	780	8	26	170	10 x M16
	16	635	840	8	26	170	10 x M16
	25	635	845	8	28	180	10 x M16
700	10	738	895	8	28	175	12 x M16
	16	738	910	8	28	175	12 x M16
	25	738	960	8	30	185	12 x M16
800	10	842	1015	8	28	175	12 x M16
	16	842	1025	8	28	175	12 x M16
	25	842	1085	8	30	185	12 x M16
900	10	945	1115	8	28	175	14 x M16
	16	945	1125	8	28	175	14 x M16
	25	945	1185	8	30	185	14 x M16
1000	10	1048	1230	8	28	175	14 x M16
	16	1048	1255	8	28	175	14 x M16
	25	1048	1320	12	30	185	14 x M16
1200	10	1255	1455	8	28	175	16 x M16
	16	1255	1485	8	28	175	16 x M16
	25	1255	1530	12	30	185	16 x M16



PRODUCT :

DISMANTLING

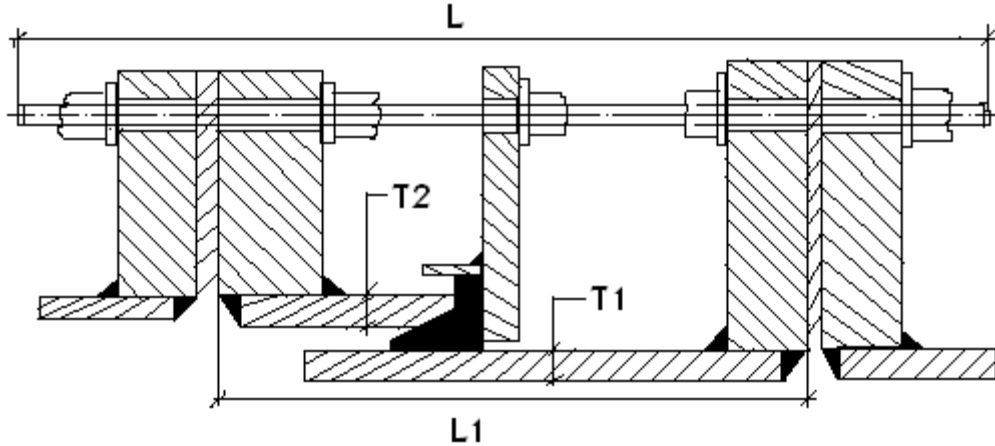
JOINT



**PRODUCT : DISMANTLING JOINT**

<b>S.NO</b>	<b>PRESSURE RATING PN</b>	<b>NOMINAL SIZE (DN) RANGE</b>	<b>DESCRIPTION</b>	<b>STANDARD</b>	<b>MATERIAL</b>
1	10	80 TO 1200	DISMANTLING JOINT	BS 4504	API 5L / SA 515 / 516 Gr.60/70
2	16	80 TO 1200	DISMANTLING JOINT	BS 4504	API 5L / SA 515 / 516 Gr.60/70
3	25	80 TO 1200	DISMANTLING JOINT	BS 4504	API 5L / SA 515 / 516 Gr.60/70

### DIMENSIONS FOR DISMANTLING JOINTS



DN	PN	Stud Length L	Length L1	Bolting	T1	T2	Adjustment Value		
							MIN	NOM	MAX
80	16	320	200	8 x M16	4	5	5	25	50
80	40	340	210	8 x M16	4	5	5	25	50
100	16	320	200	8 x M16	4	5	5	25	50
100	40	350	220	8 x M16	4	5	5	25	50
125	16	320	200	8 x M16	4	5	5	25	50
125	40	350	220	8 x M16	4	5	5	25	50
150	16	335	210	8 x M20	4	5	5	25	50
150	40	365	230	8 x M20	4	5	5	25	50
200	10	330	205	8 x M20	4	5	5	25	50
200	16	340	210	12 x M20	5	6	5	25	50
200	25	365	220	12 x M24	6	7	5	25	50
200	40	385	230	12 x M27	7	8	5	25	50
250	10	340	210	8 x M20	4	5	5	25	50
250	16	370	222	12 x M24	5	6	5	25	50
250	25	385	230	12 x M27	6	7	5	25	50
250	40	400	240	12 x M30	7	8	5	25	50
300	10	345	215	8 x M20	4	5	5	25	50
300	16	370	225	12 x M24	5	6	5	25	50
300	25	385	235	12 x M27	6	7	5	25	50
300	40	405	245	12 x M30	7	8	5	25	50



### DIMENSIONS FOR DISMANTLING JOINTS

DN	PN	Stud Length L	Length L1	Bolting	T1	T2	Adjustment Value		
							MIN	NOM	MAX
350	10	375	235	16XM20	8	8	5	25	50
	16	415	265	16XM24	8	8	5	25	50
	25	440	275	16XM30	8	8	5	25	50
400	10	380	235	16XM24	8	8	5	25	50
	16	430	275	16XM27	8	8	5	25	50
	25	450	280	16XM33	8	8	5	25	50
450	10	380	235	20XM24	8	8	5	25	50
	16	430	275	20XM27	8	8	5	25	50
	25	450	280	20XM33	8	8	5	25	50
500	10	410	265	20XM24	8	8	5	25	50
	16	445	285	20XM30	8	8	5	25	50
	25	475	300	20XM33	8	8	5	25	50
600	10	420	265	20XM27	8	8	5	25	50
	16	480	305	20XM33	8	8	5	25	50
	25	505	325	20XM36	8	8	5	25	50
700	10	425	265	24XM27	8	8	5	25	50
	16	475	305	24XM33	8	8	5	25	50
	25	535	345	24XM39	10	10	5	25	50
800	10	450	290	24XM30	8	8	5	25	50
	16	500	320	24XM36	8	8	5	25	50
	25	560	360	24XM45	10	10	5	25	50
900	10	450	290	28XM30	8	8	5	25	50
	16	500	320	28XM36	8	8	5	25	50
	25	560	360	28XM45	10	10	5	25	50
1000	10	455	290	28XM33	8	8	5	25	50
	16	520	340	28XM39	10	10	5	25	50
	25	575	360	28XM52	12	12	5	25	50
1200	10	485	320	32XM36	8	8	5	25	50
	16	540	360	32XM45	10	10	5	25	50
	25	595	380	32XM52	12	12	5	25	50